

SWINDON



**WORTHINGTON CUP
1ST ROUND ISSUE**

**TODAY'S
VISITORS**

All the latest information
on Wycombe Wanderers

**SWINDON TOWN
OPEN DAY**

All the best shots inside...

**PREMIER LEAGUE
ROUND-UP**

All the latest news and views
on the Premier League

**SWINDON VS
WYCOMBE WANDERERS**

Wednesday 12th August 1998 7.45pm kick off

Main Sponsor



Kit Sponsor



**KIDS GO FREE
AT STFC!**



Swindon Town Football Club
County Ground, County Road,
Swindon, Wiltshire, SN1 2ED.

(01793) 430430 Administration
(01793) 536170 Administration Fax
(01793) 532121 Marketing Dept.
(01793) 423771 Marketing Fax
(01793) 529000 Ticket Office
(01793) 431887 Ticket Office fax
(01793) 421303 Community Office
(01793) 423030 Club Superstore
(01793) 533212 Conference & Banqueting

Chairman:

RIKKI HUNT

Vice Chairman:

CLIFF PUFFETT

Directors:

PETER ARCHER, WILLIE CARSON O.B.E.,
PETER GODWIN C.B.E.,
MICHAEL SPEARMAN, Sir SETON WILLS Bt.

Director of Football:

RIKKI HUNT

President:

C.J. GREEN

Chief Executive:

STEVE JONES

Manager:

STEVE MCMAHON

Head of Sales & Marketing:

JULIAN WETHERALL

Head of PR & Media Relations:

STEVE SUTHERLAND

First Team Coach:

MIKE WALSH

Reserve Team Coach:

ROSS MACLAREN

Youth Team Manager:

TOMMY WHELDON

Youth Development Officer:

PHIL CANNON

Chief Scout:

LES O'NEILL

Community Development Officers:

CLIVE MAGUIRE & JON HOLLOWAY

Safety Officer/Stadium Manager:

MIKE HUGHES

Club Physios:

DAVE MOORE & DICK MACKEY

Medical Officers:

Dr. A.G. DAVIES, Dr. J.D. NICHOLAS

Consultant Orthopaedic Surgeon:

J.P. IVORY F.R.C.S.

Matchday Magazine Editor:

RICHARD MACKEY: (01793) 532121

Design:

NICK PRESCOTT

DERRICK JOHNSON BA(Hons)

Produced & Printed by:

PIA ADVERTISING & MARKETING.
(01635) 35546

Welcome to the County Ground

Tonight we will see the first ball kicked in anger at the County Ground as we face Wycombe Wanderers in the first round of the newly titled Worthington Cup.

A good cup run would go down very nicely at the start of the season, so this game is as important as any.

The Pre-season is now behind us and the general opinion is that things look promising. The first few games were a bit sloppy, but after the Tour of Ireland the lads came back with some purpose in their stride. This was much in evidence when we faced Leicester City. New boys Gareth Hall and Alan Reeves looked accomplished at the back, supported up by some confident work by Jimmy Glass.

Town started with plenty of purpose, Hay and Onuora leading the line against quality defenders Elliott and Kaamark. Walters showed all his class scoring a great goal: a controlled shot with the outside of his right boot which Keller had no chance of reaching. This was Walters fifth goal in pre-season and suggests that, far from maintaining sparks of his old form, he is playing better than ever.

We continued to create chances, but it was Leicester who finally won the game as the players lost a bit of concentration in the last ten minutes. Overall, Town played well throughout and showed plenty of encouraging signs for the season ahead.

But we didn't get off to the best of starts against Sheffield United, losing 2-1. The Blades are a quality outfit and to expect a win was asking a lot, but a draw would have been an excellent way of chalking up the first League point of the season.

Travelling fans will know that it was a mixed game. We played beneath ourselves for the first 45 and then came to life in the second- what ever Steve

McMahon said at half-time, it worked. Although our only goal of the game was a Sheffield United own goal, we created plenty of chance, and in the last 15 minutes came very close to grabbing the draw. Ndah headed a good chance over the bar and Bullock watched in despair as his powerful header was cleared off the line.

Tonight we welcome the fans, officials and players of Wycombe Wanderers Football Club. The game is likely to be a real battle with both sides wanting a cup run and with it the chance to face the country's biggest sides.

Although Wycombe only finished 14th in Division Two last season they are always capable of causing an upset. Over the summer they've signed Danny Bulman from non-league Ashford Town, and teenage central defender Lee Holsgrave, from Millwall.

Their player to watch is Maurice Harkin, an 18-year-old who looks very comfortable playing against good sides. There are also rumours that Premiership Clubs are keeping tabs on this gifted youngster.

Closer to home it is our own promising youth players who have been making the headlines with England U-18 Robin Hulbert and Fraser McHugh. McHugh had his first taste of the big time when he came on as a sub against Leicester and looked lively and confident working in the centre of midfield - definitely one to watch. So lets have everybody getting behind the lads as they go for the first win of the Season.

Everybody at Swindon Town would like to pass on the sincerest condolences to the family and friends of loyal Swindon fan Maurice Alfred Pennell who passed away recently. Maurice was an avid supporter of 45 years standing and he will be missed by all who knew him. Maurice and his wife Barbara were both season ticket holders and they followed the Town home and away for many years.

SWINDON TOWN CLUBCALL FOR ALL THE LATEST NEWS AND VIEWS
CALL: 0891 121640 CALLS ARE CHARGED SOP AT ALL TIMES

Contents

Steve McMahon

5

The Gaffer writes about Swindon's first League game against Sheffield

" I knew that if we let Sheffield dictate the pace of the game we would struggle to penetrate them so I decided to play a three man forward line to get the Blades on the 'back foot' **"**

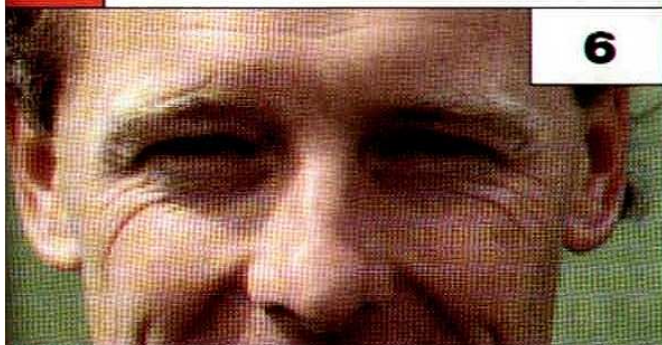


6

the visitors

Find out all the latest news on Wycombe Wanderers including an in-depth feature on their Manager - Neil Smillie.

" I am looking forward to today's game... **"**



Division One Review

15

" Fraser Digby joins Terry Venables at Crystal Palace... **"**

A brief look at all the latest news from Division One...



16

Suther's Says

Swindon Town's new Head of PR, Steve Sutherland, talks about why the League Cup is so important to English football



STFC Open Day

17

Features an open training session led by Steve McMahon and his staff, players and coaching staff meet the fans, Kramer hit the right note with the new Club song and we reveal a new mascot who is a bit "Funky"?!




Worthington
CREAMFLOW
BITTER



IT'S A MAN
Worthington

NEXT MATCH

Steve McMahon's view
(HOME)

SUNDERLAND
Sat 15th Aug 1998



"On Saturday we face one of the toughest teams in the league."

Sunderland will bring plenty of travelling fans so its up to us to try and match that. Make sure you come for what promises to be a real beller of a game"

Manager STEVE McMAHON

After a long wait, here we are tonight to see the first competitive game of a new Season at the County Ground.

Although the League is obviously our main concern, a good cup run is what every manager hopes for, to bring in some extra money to the Club and to get the chance of coming up against the Premiership big boys.

So as we face Wycombe Wanderers tonight you can guarantee we will be focussed on getting off to the best possible start.

However, a good start was one thing we didn't have on Saturday as we faced Sheffield United.

I knew that if we let Sheffield dictate the pace of the game we would struggle to penetrate them so I decided to play a three man forward line to get the Blades on the "back foot" and get them worrying about us rather than the other way around.

But throughout the first half we just didn't play with enough confidence. We expected the Blades to really come at us for the first ten minutes and the defensive line of Borrows, Hall, Reeves and Robinson was containing their front two well.

This good work was undone by some sloppy defending from

a corner. The ball came over and it was a glancing header that left Frank Talia with little chance. This was especially frustrating because we've been working hard on defending from set-plays.

Then to go two down from a free-kick into injury time of the first half was a real sickener. Frank held his hands up to that one, but the whole team have got to accept responsibility for the performance on show up to half-time.

To pull an old footballing cliché out of the bag this was really a game of two halves. The team came out for the second period with a lot more purpose.

We started to show more of the ball to Walters and Gooden began to break from midfield into attacking positions. This possession paid off when Holdsworth belted the ball into his own net after some tricky play from Walters.

I don't care how the come, at this point a goal was just what we needed. We continued to pile on the pressure. Bully had a header cleared off the line and Iffy had a good shout for a penalty turned down in the dying minutes.

It just wasn't our day, but there were plenty of positives to gleam from the disappointing result. I asked the team to up the tempo in the second half and they responded to this. The new boys Reeves and Hall are settling into their positions well.

Bullock put in another characteristic performance- he kept battling all the way, working hard in midfield. Credit also has to go to George Ndah. He has missed much of the pre-season due to his injury but he worked his socks off and had a couple of good chances.

If we can reproduce that second half performance again tonight then we'll see how well Swindon can play.

The team always appreciates your vocal support so lets hear plenty of noise as we take to the pitch tonight.

"Waiting for the season to start is always difficult for a manager"

Today's visitors **WYCOMBE WANDERERS**



This evening we welcome the players, supporters and staff of Wycombe Wanderers Football Club to the County Ground for this First Round first leg match of the newly-sponsored Worthington Cup. We hope you all enjoy the game and have a safe journey home afterwards.

Wanderers come to Town today having got their new League campaign off on the wrong-foot with a 0-1 home reverse at the hands of Luton Town on the season's opening day. Still, it was a more auspicious beginning than in 1997/98, when they crashed 2-5 at Wigan in the opener, before rallying to third in the table by mid-September.

Impressive form - including four goals struck in victories style against Southend and Blackpool - led to early talk of a play-off place for Wanderers, but it proved too much to expect as a mid-season slump saw them drop to 19th place before finally steadying to finish in a comfortable 14th spot. Part of the trouble could be attributed to John Gregory's unscheduled February departure to Aston Villa, and the subsequent upheaval always associated with such a drastic move. Could be, but for one important factor - results.

With Youth coach Neil Smillie installed in the managerial hot-seat - at least on a temporary basis - Wycombe lost only two of their last 12 games. An impressive return by anybody's standards, and included within that run was a 5-1 walloping of Plymouth Argyle.

Wanderers' main problem appears to be a fairly familiar one. A small squad makes injury problems tricky to cope with, and a lack of sufficient funds makes it almost impossible to bolster that squad with anything but Youth recruits. One such find has been the teenager Mo Harkin, who was a revelation last season, but even with the ink barely dry on a contract stretching to 2001 there are already whispers of Premiership moves afoot for the fleet-footed Harkin.

Otherwise, Neil Smillie's summer recruitment campaign consisted of Danny Bulman from non-League Ashford, and free transfers Lee Holsgrove and Chris Vinnicombe.

But tonight, of course, is all about the 'magic' of the cup, and Wycombe will be keen to earn a satisfactory result here at the County Ground this evening, and then takes Town back to their tightly-packed Adams Park ground in a fortnight's time.

Last season they crashed out of the same competition - then titled the Coca-Cola Cup of course - at the first hurdle, losing 6-5 on aggregate to Fulham after a cracking 4-4 draw at Craven Cottage. This year they will certainly be hoping to progress further - and maybe grab a few higher division scalps along the way.

Let's hope that Steve McMahon's troops can make sure that tonight is not their night.

**Centre Forward -
Keith Scott**



The team WYCOMBE WANDERERS

MARTIN TAYLOR

POSITION: Goalkeeper

BORN: 09.12.66

AGE: 31

HEIGHT: 6ft

PREVIOUS CLUB: Derby County

Signed on a free from Pride Park after a brief loan spell with Wycombe at the end of 1996/97. Was outstanding last season, keeping 18 clean sheets for Wanderers.

JASON COUSINS

POSITION: Defender

BORN: 01.10.70

AGE: 27

HEIGHT: 5ft 11in

PREVIOUS CLUB: Brentford

Currently in his eighth season at Wycombe, Jason was signed on a free transfer in July 1991 and has now made more than 350 appearances for the club. Strong in the air and powerful on the ground.

MICHAEL FORSYTH

Position: Defender

Born: 20.03.66

Age: 32

Height: 5ft 11in

Previous Club: Notts County

A reliable left-sided defender, Michael missed a large chunk of last season following a hamstring injury in

January. Highly experienced, he has been capped by England at Youth, U21 and 'B' level and also spent several years with Derby County.

JASON KAVANAGH

POSITION: Defender

BORN: 23.11.71

AGE: 26

HEIGHT: 5ft 9in

PREVIOUS CLUB: Derby County

Another former Derby player, Jason came direct from the Baseball Ground in a 20,000 deal in November 1996. Able to play on either flank, he is a natural in the wing-back role.

PAUL MCCARTHY

POSITION: Central Defender

BORN: 04.08.71

AGE: 27

HEIGHT: 5ft 10in

PREVIOUS CLUB: Brighton & HA

An U21 international for the Republic of Ireland (10 caps), Paul is a strong player who likes to play with the ball at his feet. Club captain at Adams Park, he missed the final 10 games of 1997/98 following a hernia operation.

NICKY MOHAN

POSITION: Central Defender

BORN: 06.10.70

AGE: 27

HEIGHT: 6ft 1in

PREVIOUS CLUB: Bradford City

Formerly with Middlesbrough and Leicester, Nicky is a dominant figure at the back for Wanderers, where his strength in the air makes him a valuable addition to the squad. He cost the club 80,000 when he signed in October 1997.

CHRIS VINNICOMBE

POSITION: Central Defender

BORN: 20.10.70

AGE: 27

HEIGHT: 5ft 8in

PREVIOUS CLUB: Burnley

Former Glasgow Rangers and England U21 player who was snapped up during the summer after refusing a new contract at Turf Moor. Made his debut for Wanderers in the season's opener at home to Luton Town.

STEVE BROWN

POSITION: Midfielder

BORN: 06.07.66

AGE: 32

HEIGHT: 6ft 1in

PREVIOUS CLUB: Northampton Town

Former Northampton skipper who moved to Adams Park for £40,000 in February 1994. Skillful left-sided player who even stood-in at goalkeeper against Chesterfield last season. Offered a free transfer during the summer.

DAVE CARROLL

POSITION: Midfielder

BORN: 20.09.66

AGE: 31

HEIGHT: 6ft

PREVIOUS CLUB: None

Hard-running, right-sided midfielder who enjoyed a well-earned Testimonial match against Leicester City last season. Spotted by Wycombe playing for Ruislip Manor, he began as a trainee with Fulham before slipping out of League football. Signed a new two year contract in July 1998.



The team WYCOMBE WANDERERS

JOHN CORNFORTH

POSITION: **Midfield**
BORN: **07.10.67**
AGE: **30**
HEIGHT: **6ft 1in**
PREVIOUS CLUB: **Birmingham City**

Welsh international (2 caps) and the man who makes Wycombe tick in the midfield. An excellent passer of the ball, he is also dangerous from dead-ball situations. Signed for 50,000 in December 1996.

MO HARKIN

POSITION: **Midfield/winger**
BORN: **16.08.79**
AGE: **18**
HEIGHT: **5ft 10in**
PREVIOUS CLUB: **None**

Highly-rated Northern Ireland Youth international who celebrates his 19th birthday next week. A two-footed, attacking midfielder who loves to run at defences, he is already attracting admiring glances from Premiership clubs.

KEITH RYAN

POSITION: **Midfield**
BORN: **25.06.70**
AGE: **28**
HEIGHT: **5ft 11in**
PREVIOUS CLUB: **None**

Joined Wanderers from Berkhamstead Town in the summer of 1990 and has suffered with a series of knee and back injuries almost ever

since. A versatile central midfielder, he can also play up front. Was voted the club's 'Player of the Year' last season after coming back from yet another injury.

MICHAEL SIMPSON

POSITION: **Midfield**
BORN: **28.02.71**
AGE: **27**
HEIGHT: **5ft 9in**
PREVIOUS CLUB: **Notts County**

Right-sided midfielder who likes to run at defenders and is an excellent passer of the ball. Cost just 50,000 when he signed in December 1996, but has struggled to break up the established midfield partnership of Dave Carroll and Steve Brown at Adams Park.

STEVE MCGAVIN

POSITION: **Forward**
BORN: **24.01.69**
AGE: **29**
HEIGHT: **5ft 9in**
PREVIOUS CLUB: **Birmingham City**

Former Ipswich Town trainee who slipped out of League football with Sudbury Town and Colchester - then GMVC - before bouncing back to the big time with Birmingham City in January 1994, in a transfer worth 150,000. Moved to Wycombe for 140,000 14 months later. Likes to play a link role between midfield and forwards.

PAUL READ

POSITION: **Forward**
BORN: **25.09.73**
AGE: **24**
HEIGHT: **5ft 11in**
PREVIOUS CLUB: **Arsenal**

Signed from the Gunners for 35,000 in January 1997, Paul is a former England Schools international who is

pacey with a good right foot shot. Scored three goals in his first three games for Wanderers, but was subsequently dropped and struggled to win back a regular place in the side.

KEITH SCOTT

POSITION: **Forward**
BORN: **09.06.67**
AGE: **31**
HEIGHT: **6ft 3in**
PREVIOUS CLUB: **Norwich City**

Experienced and well-travelled target man who has also played for Lincoln, Stoke, Bournemouth, Watford and, of course, Swindon Town. Currently in his second spell at Adams Park. As many Town fans will remember, Keith is excellent in the air and he managed 12 goals in an injury-hit season in 1997/98.

Other Squad members include:

Alan Beeton (defender); Lee Holsgrove (defender); Gary Wraight (midfielder); Aaron Patton (midfielder); Mark Stallard (forward).



Centre Forward -
Steve McGavin

The manager **NEIL SMILLIE**

A widely experienced and well travelled winger in his playing days - which included a spell down the road at Reading - Neil was handed the Wycombe job on a permanent basis at the end of the 1997/98 campaign, having made an impressive fist of the job on a caretaker basis following the sudden departure of John Gregory to Aston Villa.

A two-footed player, Smillie started his career as a YTS at Crystal Palace having been spotted playing in the same Essex Schools side as one Glenn Hoddle. During eight seasons at Selhurst Park, he played under two legendary coaches in the shape of Malcolm Allison and Terry Venables, who is now, of course, back in charge at the South London club.

In 1982/83, Smillie moved south to Palace's bitter rivals Brighton and Hove Albion and spent three happy years at the Goldstone Ground - time which included an FA Cup Final appearance against Manchester United in May 1983.

His next port of call was Watford, where he came into contact with yet another future England manager in the shape of Graham Taylor in 1985/86, before two years later moving on to Reading.

While at Elm Park Smillie enjoyed his second Wembley appearance, scoring in a 4-1 Simod Cup Final triumph over Luton Town, before upping sticks again, this time to join Brentford, who he helped into the First Division.

After four seasons with the Griffin Park club he made his final transfer, to Gillingham, where he enjoyed his first spell in management. It was to be a fairly brief experience, and when new chairman Paul Scally took control, Smillie was on his way out of Priestfield.

He joined Wycombe as Youth team coach in July 1995, and stood in as caretaker following the departure of Alan Smith in 1996, before John Gregory arrived as Smith's full-time replacement.

When Gregory unexpectedly returned to Villa Park in February of this year it was to Smillie that the Wycombe board once more turned. After taking ten points from a possible 12 he was handed the job on a permanent basis.



Statistics compiled by
Football Information Services
Telephone: 0151-632 5679

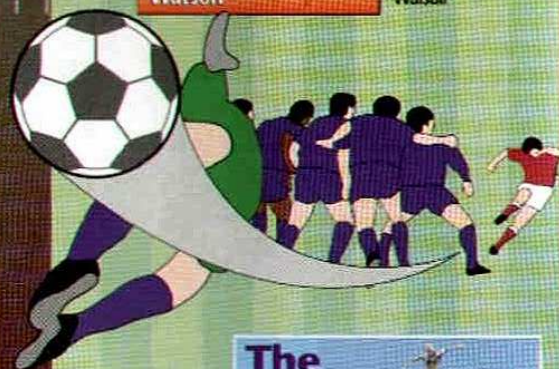
League Cup Finals 1961 - 1998

| Year | Winners | Runners-Up | Score | The |
|------|-------------------|-------------------|---------------------------|--------------------------|
| 1961 | Aston Villa | Rotherham Utd | 0-2, 3-0 (aet) | Football |
| 1962 | Norwich City | Rochdale | 3-0, 1-0 | League |
| 1963 | Birmingham City | Aston Villa | 3-1, 0-0 | Cup |
| 1964 | Leicester City | Stoke City | 1-1, 3-2 | |
| 1965 | Chelsea | Leicester City | 3-2, 0-0 | |
| 1966 | West Bromwich A. | West Ham United | 1-2, 4-1 | |
| 1967 | Q.P.R. | West Bromwich A. | 3-2 | |
| 1968 | Leeds United | Arsenal | 1-0 | |
| 1969 | Swindon Town | Arsenal | 3-1 (aet) | |
| 1970 | Manchester City | West Bromwich A. | 2-1 (aet) | |
| 1971 | Tottenham H. | Aston Villa | 2-0 | |
| 1972 | Stoke City | Chelsea | 2-1 | |
| 1973 | Tottenham H. | Norwich City | 1-0 | |
| 1974 | Wolverhampton W. | Manchester C. | 2-1 | |
| 1975 | Aston Villa | Norwich City | 1-0 | |
| 1976 | Manchester C. | Newcastle United | 2-1 | |
| 1977 | Aston Villa | Everton | 0-0, 1-1 (aet), 3-2 (aet) | |
| 1978 | Nottingham Forest | Liverpool | 0-0 (aet), 1-0 | |
| 1979 | Nottingham Forest | Southampton | 3-2 | |
| 1980 | Wolverhampton W. | Nottingham Forest | 1-0 | |
| 1981 | Liverpool | West Ham United | 1-1 (aet), 2-1 | |
| 1982 | Liverpool | Tottenham H. | 3-1 (aet) | The Milk Cup |
| 1983 | Liverpool | Manchester United | 2-1 (aet) | |
| 1984 | Liverpool | Everton | 0-0 (aet), 1-0 | |
| 1985 | Norwich City | Sunderland | 1-0 | |
| 1986 | Oxford United | Q.P.R. | 3-0 | |
| 1987 | Arsenal | Liverpool | 2-1 | The Littlewoods Cup |
| 1988 | Luton Town | Arsenal | 3-2 | |
| 1989 | Nottingham Forest | Luton Town | 3-1 | |
| 1990 | Nottingham Forest | Oldham Athletic | 1-0 | |
| 1991 | Sheffield Weds. | Manchester United | 1-0 | The Rumbelows League Cup |
| 1992 | Manchester United | Nottingham Forest | 1-0 | |
| 1993 | Arsenal | Sheffield Weds. | 2-1 | The Coca-Cola Cup |
| 1994 | Aston Villa | Manchester United | 3-1 | |
| 1995 | Liverpool | Bolton Wanderers | 2-1 | |
| 1996 | Aston Villa | Leeds United | 3-0 | |
| 1997 | Leicester City | Middlesbrough | 1-1 (aet), 1-0 (aet) | |
| 1998 | Chelsea | Middlesbrough | 2-0 | |

League Cup Semi-Final Appearances



League Cup Top Scorers 1997-98



1997-98 League Cup Average Attendances

| | Aggregate | Total Att |
|------------|-----------|------------------------------|
| Final | 77,698 | 1,483,685 |
| Semi Final | 33,928 | Games 153 |
| Round 5 | 23,284 | Average Att. per match 9,697 |
| Round 4 | 21,013 | |
| Round 3 | 16,819 | |
| Round 2 | 7,956 | |
| Round 1 | 4,888 | |

The Milk Cup

Liverpool, Norwich and Oxford liked their pintas!



SWINDON
PHONE: 01793 520002

CHIPPENHAM
PHONE: 01249 653255

| | | | |
|---------------|--------------|--|--|
| ARRIVA | Cowie | ARRIVA/Cowie Ford Herring Way Roundabout, Swindon ARRIVA/Cowie Ford Cocklebury Road, Chippenham | |
|---------------|--------------|--|--|

ON 1 JANUARY 1998 YOUR LOCAL COWIE FORD DEALER CHANGED ITS NAME TO ARRIVA FORD

Kick off the new season with Mizuno
 – official kit supplier to Swindon Town F.C.

For more information on Mizuno products call our customer services on 01793 423030

Mizuno
 SERIOUS PERFORMANCE

SWINDON TOWN CLUBCALL FOR ALL THE LATEST NEWS AND VIEWS
CALL: 0891 121640 CALLS ARE CHARGED 50P AT ALL TIMES

ELEVEN



Fraser McHugh shows his pace against Leicester's Steve Walsh.



Iffy Onoura takes on Leicester's keeper Kasey Keller.



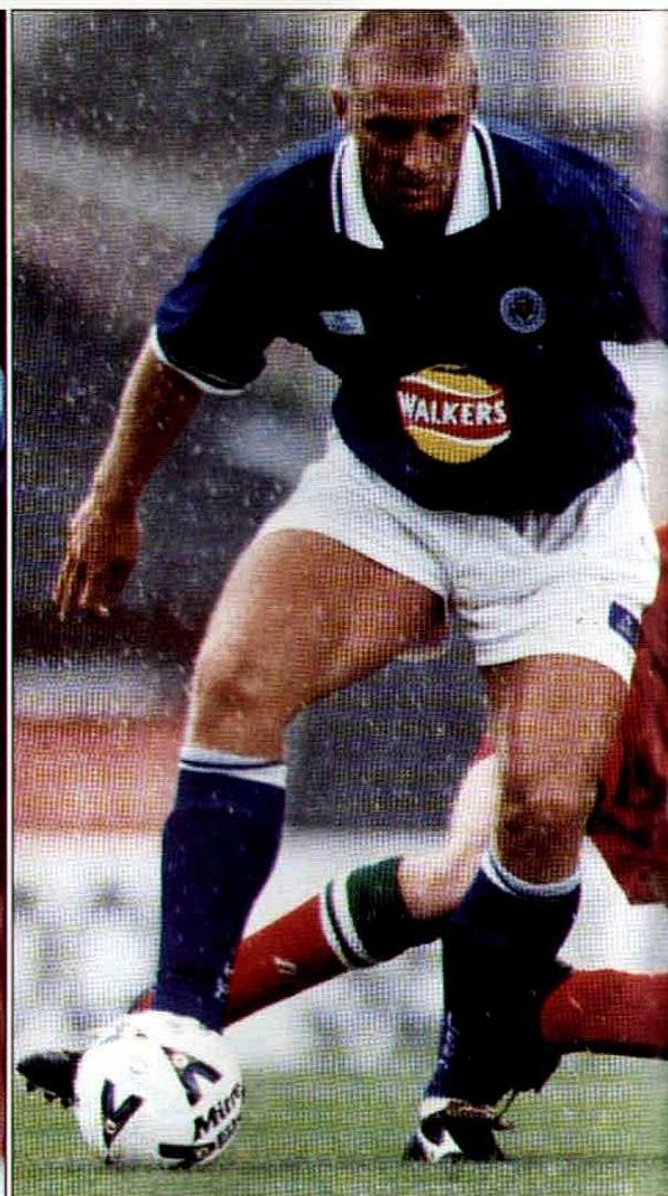
'High Five' - Mark Walters Walters' stu against Leic



SWINDON 1 LEICES



Alan Reeves matches Leicester's Ian Marshall in the aerial battle.





Iffy Onoura & s celebrate after nning strike ester



'The Gentle Giant' - Leicesters' Matt Elliot eases Chris Hay off the ball!

HOW THEY PLAYED

- 1 **JIMMY GLASS** had a fairly good game looking confident with crosses
- 2 **MARK ROBINSON** a steady game on the right and knocked in some good crosses
- 3 **GARETH HALL** looked accomplished playing at the back. Rarely did the forwards get the better of him.
- 4 **KEVIN WATSON** worked hard and showed one or two creative touches in midfield
- 5 **ALAN REEVES** showed all his experience to to keep Marshall quiet
- 6 **BRIAN BORROWS** a trademark sold display from the the skipper
- 7 **MARK WALTERS** the midfield maestro ran the show and scored a great goal - our Man of the Match
- 8 **CHRIS HAY** showed a few sparks of how dangerous he can be when running at Leicester's defence
- 9 **IFFY ONOURA** caused problems for Sheffield United with his strength - had a busy game.
- 10 **DARREN BULLOCK** battled well in midfield to stop Leicester's attacks
- 11 **TY GOODEN** caused problems with his pace and got to the by-line to knock in some telling crosses

.....

FRANK TALIA (for Glass, 45)
FRAZER MCHUGH (for Watson, 53)
SOL DAVIS (for Robinson, 70)
PHILLIPE CUERVO (for Gooden, 70))
CRAIG TAYLOR (not used)

The opposition line-up

LEICESTER CITY: Keller, Suray (Guppy, 26), Kaamark, Elliot, Naish, Izzet (Wilson, 45), Campbell, Fenton (Oakes, 82), Marshall, Ullathorne



Wenger Looks East



Arsenal Boss Arsene Wenger has been in talks with the Japanese officials about becoming the coach of Japan's national side.

Wenger has one year left to run on his contract with the Premiership giants and has stated that he would like to return to Japanese football, where he had so much success as Coach of Nagoya Granmpus Eight in the 95/96 season.

Staying with the Gunners, Wenger has secured the transfer of Argentinian defender Nelson Vivas from Lugano.

Vivas has 32 caps for his country and played in all but one of his countries games in the World Cup Finals.

Collymore could be back



After the scandal surrounding the incident in a Paris bar during France 98 Stan Collymore looks set to return to the Premiership despite injury problems.

The gifted Aston Villa forward, who has had as many trials on as off the pitch, appears to have recovered well from a thigh injury picked up during a pre-season game against Peterborough.

If all goes well Stan should be available for selection for Villa's opening game against Everton.

Van is an Unhappy Man!



Talented centre forward Pierre Van Hooijdonk seems no closer to resolving problems at Nottingham Forest.

The World Cup star has been unsettled since the sale of his partner up front, Kevin Campbell. The dynamic duo bagged 57 goals between them last season and without Campbell, Pierre feels that it will be hard work in the Premiership- up front on his own!

Campbell was sold to the Turkish side Trabzonspor, and as one great player leaves so Pierre, Forests' other leading light, appears destined to depart the City Ground.

PREMIERSHIP



CARLING
F.A. PREMIERSHIP

ROUND-UP

Bought On a Wim?



Dutch World Cup hero Wim Jonk is rumoured to be on his way to the Premiership.

Everton, Forest and Newcastle have all had a close look at the talented midfielder. But it is Sheffield Wednesday who are the most likely to sign Jonk, who has 41 caps, for around £2 million.

Hendry Heads Home



After weeks of speculation Scotland's World Cup skipper is heading back across the border to join Glasgow Rangers.

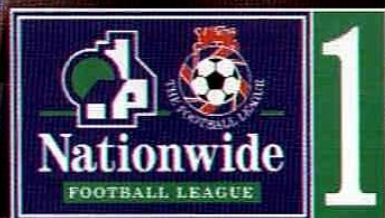
The move from Blackburn to Rangers has been subject to heated debate about the final price (Rangers offering £2.5 Million while Rovers wanted £4 million), both Clubs having now settled for....

But money was not on the mind of Henderson who maintains the transfer was for personal reasons- so he can be closer to his family.



NATIONWIDE LEAGUE CROWDS UP

The opening weekend of the Nationwide League season saw the highest crowd figures in 20 years. Matches from the first three divisions pulled in a massive 350,000.



NATIONWIDE DIVISION 1 ROUND-UP

Port Un-Vale new signing



After last seasons dramatic escape from Division Two football, Port Vale's John Rudge seems adamant that it won't happen again.

Peter Beadle is the latest signing for £300,000 from Second Division Bristol Rovers. Rudge has injected a lot of youth in his side over the summer by signing Man City youngster Brian McGlinchey and Scunthorpe full-back Michael Walsh.

Eadie Stays



England B International Darren Eadie is set to stay at Norwich after signing an extension to his contract.

The exciting young winger has signed a two year extension that will keep him at Carrow Road until 2002.

But question marks still hover over the Canaries as fans wait to see if newly installed Manager Bruce Rioch will be able to work with their new director of football Bryan Hamilton

Digby goes to Palace



After weeks of speculation Swindon Town stalwart Fraser Digby has signed for recently relegated Crystal Palace.

But with the reliable Kevin Miller already at Palace there have to be doubts about whether Digby will get in the starting line-up. Only Terry Venables and his right hand man (and ex-Swindon defender) Terry Fenwick know the answer.

Close Scrutiny on Kieron

Ipswich defender Kieron Dyer is on the shopping lists of Premiership clubs for the coming season.



Under-21 International Dyer, who can play as either full-back or midfield, is viewed as one of the leading lights outside the Premiership. Ipswich also have promising youngsters such as keeper Richard Wright, James Scowcroft and former Man United youth player David Johnson. Town Boss George Burley will need to work hard to keep such talented players at Portman Road.

Clark injury Mars first Win

Sunderland got off to the best possible starts to a new campaign with a 1-0 win over QPR. But this win was over shadowed by an injury to talented midfielder Lee Clark.



Clark was stretched off the field of play and taken to hospital with a suspected broken ankle. The injury came as a result of a late challenge by QPR's Keith Rowland.

Mixu on the Move

Finnish international Mixu Paatelainen



could be on his way out of Molineux as Wolves boss Mark McGhee tries to streamline his squad.

Paatelainen, who joined Wolves last summer from Bolton for £200,000 has already been linked with a move to Preston. McGhee has already sold Dougie Freedman to Nottingham Forest and Jason Roberts to Bristol Rovers.



Nationwide Division
One Fixtures 15/8/98

| | | |
|---------------|--|----------------|
| BOLTON WINDS | <input type="checkbox"/> vs <input type="checkbox"/> | GRIMSBY TOWN |
| CREWE ALEX. | <input type="checkbox"/> vs <input type="checkbox"/> | BARNLEY |
| HUDDERSFIELD | <input type="checkbox"/> vs <input type="checkbox"/> | PORT VALE |
| IPSWICH TOWN | <input type="checkbox"/> vs <input type="checkbox"/> | BURY |
| OXFORD UTD | <input type="checkbox"/> vs <input type="checkbox"/> | WOLVES |
| QPR | <input type="checkbox"/> vs <input type="checkbox"/> | BRISTOL CITY |
| STOCKPORT CO. | <input type="checkbox"/> vs <input type="checkbox"/> | NORWICH CITY |
| TRANMERE | <input type="checkbox"/> vs <input type="checkbox"/> | PORTSMOUTH |
| WATFORD | <input type="checkbox"/> vs <input type="checkbox"/> | BRADFORD CITY |
| WEST BROM | <input type="checkbox"/> vs <input type="checkbox"/> | SHEFFIELD UTD |
| SUNDAY GAME: | | |
| BIRMINGHAM | <input type="checkbox"/> vs <input type="checkbox"/> | CRYSTAL PALACE |

Suther's SAYS

The Worthington Cup was officially launched last week at venues in London and Manchester and I have to admit that after 7 years of being involved in organising sponsorship launches for the Football League, it was strange for me to attend a meeting like this on the "other side of the fence" as a club representative.

The fact that Bass Brewers have put their backing to The League Cup is a massive boost to The Football League and it safeguards the future of, arguably, The League's most important competition. Why do I say that? Quite simply the revenue generated by the Cup amounts to over £15 million in net gate receipts but perhaps more importantly, The League Cup forms the main component of The Football League's £25 million per annum television contract with Sky Television.

It was for these reasons that The Football League

Head of PR Steve Sutherland looks at why the League Cup is still vital to the game...



Parading the 1969 Cup

successfully fought so hard last season to regain the European place for the winners after this right was taken away by UEFA. UEFA's contention was that as the FA Premier League had refused to reduce to 18 clubs, one European place should be removed and it was The League Cup that lost out. Of course, without a European 'carrot' the attraction of The League Cup to the 'big' Clubs was diminished, putting at risk the future of the Competition and, ultimately, The League. Fortunately, UEFA were forced to reinstate the European place and the winners of The Worthington Cup are now guaranteed entry into the UEFA Cup for at least 3 years.

The advent of the new 'identity' of The League Cup coincided with a change to the format of the competition which sees the introduction of seeding in the First Round. This is designed to give 'lower' division clubs an opportunity early in the season to play one of the Country's leading clubs.

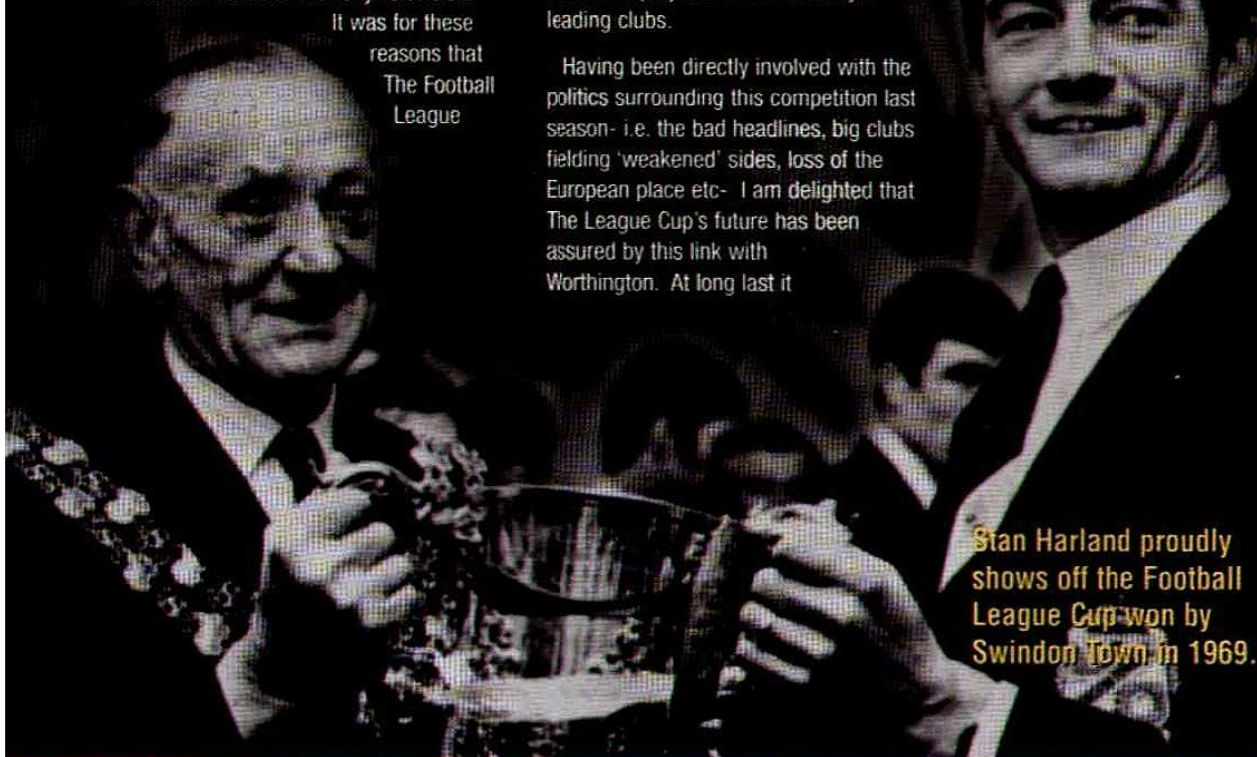
Having been directly involved with the politics surrounding this competition last season - i.e. the bad headlines, big clubs fielding 'weakened' sides, loss of the European place etc - I am delighted that The League Cup's future has been assured by this link with Worthington. At long last it



seems that this competition's value and standing in the game is now recognised and it was tremendous to see the very high profile support for the Worthington Cup at the launch from such key footballing figures as Alex Ferguson, Arsene Wenger, Gordon Taylor, the Chief Executive of the PFA and Gianluca Vialli.

So, after all the talking, glitzy launches and press releases, tonight the Worthington Cup really gets going. The League Cup has a special place in the hearts of Swindon Town Football Club, please remember this tonight and get behind the team for what should be an interesting clash with our near neighbours, Wycombe Wanderers.

If you see me in the bar after the game, mine's a pint - of Worthington of course!



Stan Harland proudly shows off the Football League Cup won by Swindon Town in 1969.

OPEN DAY 1998

Steve McMahon

The Gaffer takes time out to talk to disabled supporters at Swindon Town's recent open day.



Funky unveiled

Here he is! Swindon Town's newest recruit was unveiled at the open day. He proved very popular with the younger visitors and will be a welcome addition to the County Ground.



training session

First Team coach, Mike Walsh, held an open training session at the open day to give fans an insight into how the lads are put through their paces.



STFC's new theme tune

Swindon band 'Kramer' sing the official anthem of Swindon Town "Singing Out For Swindon". Fans please note, there will be another live performance of this song before the Sunderland game!!



DAVE HOLLISTER'S WINNING WAYS



Whichford Hyundai

Kennedy Drive, Eldene, Swindon, Wiltshire SN3 3SB 01793 614855



WHEN ALL YOU WANT IS EVERYTHING

Whichford Hyundai, delighted with the outcome of last seasons involvement with the club, have not hesitated in linking another new car to this terms half-time draw.

The photograph below shows Phillip Peters of Lydiard Millicent collecting the car he won last season from the Kennedy Drive showrooms.

Whichfords' principal dealer Cyril Carpenter - flanked by Phil and myself - is seen handing over the keys at the presentation. This time next year **IT COULD BE YOU** in the photograph. Please read on!

This years draw is called **"Golden Harvest"**. There are three cash prizes instead of one last time. But instead of just one in every hundred tickets qualifying for the car draw it will be up to three in every ten! This is because **ANY OTHER** ticket number ending with the same digit as **ANY ONE** of the three cash-winning tickets will secure entry. (See reverse of the tickets for details.)

NO SUBSTITUTE!

No matter what size of screen you watched the World Cup games on, you must admit it was no substitute for the real thing. Admittedly, it was entertaining but any similarity

with the true-to-life atmosphere of being at a real live game began and ended with the team news. Television can never provide true supporters with what they really want and will never reward the smaller clubs as true supporters do. For the perfect example, let us return to Friday 28th November 1997. The Charlton Vs Swindon fixture was **"live"** on Sky TV and it was hardly a warm evening. Even so, it was a complete sell-out! **AND LOOK WHERE CHARLTON ATHLETIC ARE NOW!**

It wasn't television that made it happen for our fellow **"Robins"** at the Valley...it was **PASSIONATE SUPPORT** from those who love **THEIR** club! This game took place in the first half of the season, so it was not a case of **"so-called"** Charlton fans **"jumping on the bandwagon"**. They were there throughout the season, providing the music for the players to dance to. This underlines the fact that players and fans cannot be separated in interest or divided in purpose. Just reflect on all **"our"** past glories of which there are many. None were achieved in a County Ground that produced a level of sound permissible in a reference library!

We are still looking for the owner of Golden Harvest ticket number 0104 sold at the Leicester City friendly. It's worth **£154** to its holder!



**WIN WORTHINGTON CUP TICKETS
OR A WORTHINGTON GIFT PACK**

**The
next**



round's on us...

... even if your team doesn't make it through! To celebrate the launch of the Worthington Cup, we're giving you a chance to win either Second Round tickets, or a Worthington Cup gift pack, which includes four cans of Worthington Creamflow bitter. Just answer this question and you could be a Worthington winner!

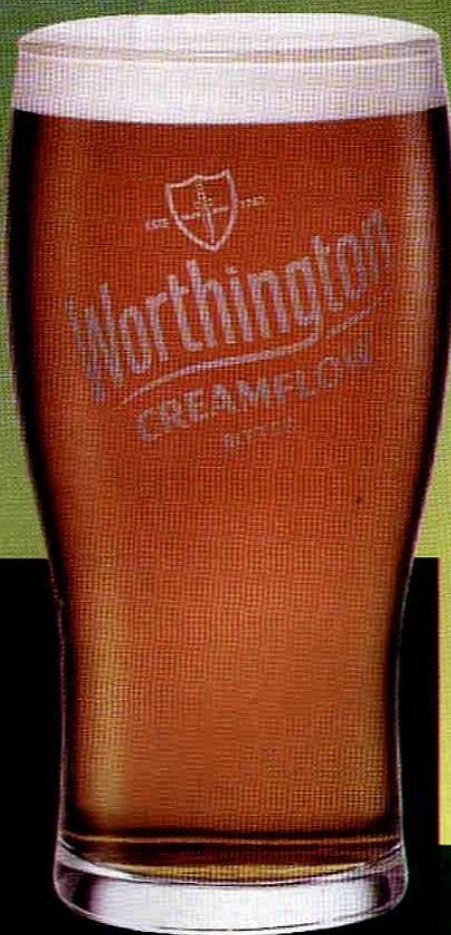
Q Which manager said before the 1990 League Cup Final:
"The only person certain of boarding the coach for the Final is
Albert Kershaw, and he'll be driving it!"

A. Harry Redknapp **B.** Brian Clough **C.** Danny Wilson

THE PRIZES

One pair of tickets are available for BOTH legs of ALL 24 Second Round Worthington Cup fixtures - that's 48 fans winning a total of 96 tickets.

Prize winners who'd prefer a Worthington Cup gift pack will receive four cans of Worthington Creamflow Bitter, a document bag and a T-Shirt. We've got 48 gift packs to give away.



SO YOU THINK YOU KNOW THE ANSWER?

CALL US NOW ON 0171- 292 5235

(Calls should cost no more than 25p). Please give us your name, age, address, daytime telephone number and the team you support.

TERMS & CONDITIONS

1.) All entrants must be over 18 2.) All competition entries must be received by 31/08/98 3.) A total of 100 winners will be drawn at random 4.) Each winner can only claim one prize 5.) The first randomly drawn name will get the first choice of prize and so on until the 100th winner 6.) Choice of prize depends on availability 7.) Editor's decision is final.

IT'S A FAN THING

MARKETING NEWS

Today we are delighted to welcome our Matchball Sponsor, Impact, to tonight's game against Wycombe Wanderers.

Impact

Impact are the International Exhibition Stand, Design and Contract specialists who are based in Okus Trading Estate, Swindon. They undertake the entire project from initial briefing to completion all over mainland Europe as well as the Far East and the USA. *Impact* have well equipped workshops, full computer

based graphic production, extensive storage options and a comprehensive fitting and transport division giving a total solution for corporate purchasing of exhibition and display products. Recent expansion has included a specialist sign division incorporating sports ground signage, corporate livery, retail and point of sale. For more information please contact David Jackson on 01793 435455.

If you are interested Sponsoring a Matchday or Match Ball at Swindon Town this season contact the Marketing Team on (01793) 532121.

Why not entertain your clients at Swindon Town this season ?



Matchday Sponsorship

Matchday Sponsorship offers a very powerful package of benefits that enables your company to maximise on a wide range of promotional and hospitality opportunities.

Matchball Sponsorship

Our Match Ball Sponsorship package offers a unique opportunity for you to create your own occasion in a personal and relaxed atmosphere and is guaranteed to make a big impression on you and your guests.



Executive Membership

The Executive Suite is an ideal venue for Corporate entertainment or simply for enjoying football in comfort and style.

Are you looking for a venue that is located in the centre of town, but with ample free car-parking? Are you looking for a venue that offers the highest standard of service but at competitive prices?

Then why not consider Swindon Town Football Club - Swindon's unique venue.

For more information please call: 01793 532121

Marketing Department, Swindon Town FC, County Ground Road, Swindon, SN1 2ED.

THE SWINDON TOWN SUPERSTORE

SALE

**YOU'VE NEVER
SEEN ANYTHING
LIKE IT!**

SALE STARTS: Wed 12th August - 9.00am
SALE FINISHES: Sat 15th August - 5.15pm

WE ARE PLEASED TO ACCEPT



OPENING HOURS

Mon - Fri: 9.00am - 6.00pm

Non matchday Sat: 10.00am - 4.00pm

Matchdays: 9.30am - Then after the game

SWINDON TOWN CLUBCALL FOR ALL THE LATEST NEWS AND VIEWS
CALL: 0891 121640 CALLS ARE CHARGED SOP AT ALL TIMES

TWENTY ONE



JR'S AND THE R'S

Sponsored by



WITH HELEN MERCER

Here we go with our first evening match of the season, the Worthington Cup first round, first leg, and welcome to all the Wycombe Wanderers Juniors this evening.

JR'S & R'S WELCOME PACKS

The Jrs & R's packs will be ready for collection from the Sunderland game, if you are a season ticket holder, you will need to produce your season ticket to claim your pack, and complete the form at the kiosk. If you are not a season ticket holder, we will have your name at the kiosk with your packs for collection. Don't worry if you are not attending the Sunderland game as the packs will be available all season!

RADIO ROBIN

Radio Robin kicked off last Friday, 6.30pm BBC Wiltshire Sound, you can hear it again this Saturday as a special treat (it is normally the first Friday and second Saturday) between 1pm and 2pm. Listen to the latest news from behind the scenes, what's happening in the treatment room and that burning question - did the Gaffer like school dinners? You won't believe some of the questions I asked him, this is one programme not to be missed. This programme gives you the opportunity to interview your favourite player, or have a 'fix it'. Write in to me and tell me why I should fix it for you. Shaun may call you up, so when the phone rings don't say 'Hello' sing 'Singing out for Swindon' and you could win a spot prize.

*Is it a bird...
is it a plane...
no it's Swindon's
NEW mascot -
'FUNKY FLEDGLING'
WOW!*

AWAY TRIPS

Don't forget to book your trip to Wolves, we will be taking Funky on this trip, and we will be Singing out for Swindon all the way! It could be your chance to be an away mascot for the day too. The costings for all the trips are as follows and you can book your places at the Jr's & R's kiosk at home matches or write to me at the club.

| | Adults | Juniors |
|-------------------------------|--------|---------|
| Wolves Sat 22nd Aug. | £14 | £9 |
| Portsmouth Sat 12th Sept. | £14 | £8 |
| Watford Sat 27th Feb. | £14 | £8 |
| QPR Sat 20th March | £14 | £8 |
| Crystal Palace Sat 17th April | £15 | £10 |
| Norwich Sat 1st May | £18 | £13 |

If you wish to book all 6 of the trips the junior price is £49!

Have a wonderful evening Jr's & R's, and sing as loud as you can for the lads!



THE 1998/99 SEASON

1st team fixtures



F.A. CUP
WORTHINGTON CUP

| | | |
|-------------|------------------------|-------|
| Sat Aug 08 | Sheffield United | A 1-2 |
| WED AUG 12 | WYCOMBE W. WC1 (1) | H |
| SAT AUG 15 | SUNDERLAND | H |
| Tue Aug 18 | Wycombe W. WC1 (2) | A |
| Sat Aug 22 | Wolverhampton W. | A |
| SAT AUG 29 | PORT VALE | H |
| Mon Aug 31 | Bury | A |
| SAT SEPT 05 | BRISTOL CITY* | H |
| WED SEPT 09 | OXFORD UNITED* | H |
| Sat Sept 12 | Portsmouth | A |
| SAT SEPT 19 | WATFORD | H |
| Fri Sept 25 | Tranmere Rovers | A |
| Tue Sept 29 | Bolton Wanderers | A |
| SAT OCT 03 | STOCKPORT COUNTY | H |
| SAT OCT 10 | HUDDERSFIELD T. | H |
| Sat Oct 17 | Ipswich Town | A |
| Tue Oct 20 | Birmingham City | A |
| SAT OCT 24 | W.B.A. | H |
| SAT OCT 31 | QUEENS PARK RANGERS | H |
| Sat Nov 07 | Crewe Alexandra | A |
| Sat Nov 14 | Bradford City (FA.C1) | A |
| SAT NOV 21 | CRYSTAL PALACE | H |
| Sat Nov 28 | Grimsby Town | A |
| SAT DEC 05 | NORWICH CITY (FA.C2) | H |
| SAT DEC 12 | BRADFORD CITY | H |
| Sat Dec 19 | Barnsley | A |
| SAT DEC 26 | WOLVERHAMPTON W. | H |
| Mon Dec 28 | Bristol City | A |
| Sat Jan 02 | (FA.C3) | A |
| SAT JAN 09 | SHEFFIELD UNITED | H |
| Sat Jan 16 | Port Vale | A |
| Sat Jan 23 | (FA.C4) | A |
| SAT JAN 30 | BURY | H |
| Sat Feb 06 | Sunderland | A |
| Sat Feb 13 | Oxford Utd (FA.C5) | A |
| SAT FEB 20 | PORTSMOUTH | H |
| Sat Feb 27 | Watford | A |
| WED MAR 03 | TRANMERE ROVERS | H |
| SAT MAR 06 | BOLTON W. (FA.C6) | H |
| Tue Mar 09 | Stockport County | A |
| SAT MAR 13 | CREWE ALEXANDRA | H |
| Sat Mar 20 | Queens Park Rangers | A |
| Sat Mar 27 | W.B.A. | A |
| SAT APR 03 | IPSWICH TOWN | H |
| Mon Apr 05 | Huddersfield Town | A |
| SAT APR 10 | BIRMINGHAM C. (FA.CSF) | H |
| Sat Apr 17 | Crystal Palace | A |
| SAT APR 24 | GRIMSBY TOWN | H |
| Sat May 01 | Norwich City | A |
| SUN MAY 09 | BARNSELY | H |
| Sat May 22 | F.A. Cup Final | |

Fixtures and Kick-Off times are subject to alteration for Television purposes and other League requirements. All Saturday home matches Kick-Off at 3pm. All home evening matches Kick-Off at 7.45pm

*Tickets for these games will not be on sale on the day of the match.

reserve fixtures

| | | |
|-------------|--------------------|---|
| Wed Aug 19 | Barnet | A |
| WED AUG 26 | FULHAM | H |
| WED SEPT 02 | Q.P.R. | H |
| Wed Sept 16 | Wycombe W. | A |
| WED SEPT 23 | LUTON TOWN | H |
| WED SEPT 30 | GILLINGHAM | H |
| Wed Oct 07 | Watford | A |
| WED OCT 14 | OXFORD UTD | H |
| WED OCT 28 | PETERBOROUGH U. | H |
| Mon Nov 02 | Northampton T. | A |
| WED NOV 18 | BRIGHTON & H.A. | H |
| Wed Nov 25 | Cambridge Utd | A |
| WED DEC 02 | READING | H |
| Wed Dec 16 | Portsmouth | A |
| Wed Jan 06 | Crystal Palace | A |
| WED JAN 13 | BRENTFORD | H |
| Wed Jan 20 | Ipswich Town | A |
| WED FEB 03 | NORWICH CITY | H |
| Wed Feb 10 | Colchester Utd | A |
| WED FEB 24 | WEST HAM UTD | H |
| Wed Mar 10 | Tottenham H. | A |
| WED MAR 17 | ARSENAL | H |
| Wed Mar 24 | Charlton Ath. | A |
| WED MAR 31 | CHELSEA | H |
| Wed Apr 07 | Wimbledon | A |
| WED APR 14 | SOUTHAMPTON | H |
| Wed Apr 21 | A.F.C. Bournemouth | A |

All home matches are to be played at the County Ground kick-off time 7.15pm. Kick-off times are subject to change without prior warning.

first team appearances 1997/98

| PLAYER NAME: | APPS. | GLS. |
|-------------------|--------|------|
| WAYNE ALLISON | 18 | 3 |
| BRIAN BORROWS | 39 | 0 |
| DARREN BULLOCK | 25(5) | 0 |
| LEE COLLINS | 23(4) | 1 |
| STEVE COWE | 8(10) | 2 |
| PHILIPPE CUERVO | 15(9) | 0 |
| IAN CULVERHOUSE | 10(2) | 0 |
| FREDERIC DARRAS | 14(2) | 0 |
| SOL DAVIS | 4(1) | 0 |
| FRASER DIGBY | 39 | 0 |
| JASON DRYSDALE | 13(4) | 0 |
| STUART ELLIOTT | 1(1) | 0 |
| STEVE FINNEY | 18(8) | 4 |
| TY GOODEN | 41(1) | 2 |
| CHRIS HAY | 32(6) | 14 |
| BOBBY HOWE | 9(3) | 0 |
| ROBIN HULBERT | (1) | 0 |
| DAVID KERSLAKE | 9 | 0 |
| SCOTT LEITCH | 27(1) | 2 |
| STEVE MILDENHALL | 4 | 0 |
| ALAN McDONALD | 32(5) | 2 |
| STEVE MCMAHON | (1) | 0 |
| ALEX MEECHAN | (1) | 0 |
| GEORGE NDAH | 15 | 1 |
| IFERM ONUORA | 5 | 1 |
| MICHAEL PATTIMORE | (2) | 0 |
| MARK ROBINSON | 27(1) | 1 |
| MARK SEAGRAVES | 7 | 0 |
| ALEX SMITH | 2(3) | 0 |
| FRANK TALIA | 3 | 0 |
| CRAIG TAYLOR | 29(4) | 2 |
| MARK WALTERS | 26(11) | 5 |
| TONY WARNER | 2 | 0 |
| KEVIN WATSON | 14(4) | 0 |

youth fixtures

South East Counties League Division 2

| | | |
|------------|-------------------|---|
| Sat Aug 08 | Barnet | A |
| SAT AUG 15 | BRENTFORD | H |
| Sat Aug 22 | AFC Bournemouth | A |
| WED AUG 29 | BRIGHTON & H.A. | H |
| Sat Sep 05 | Bristol Rovers | A |
| SAT SEP 12 | OXFORD UNITED | H |
| Sat Sep 19 | Reading | A |
| SAT SEP 26 | WYCOMBE W. | H |
| Sat Oct 03 | Gillingham | A |
| SAT OCT 10 | LEYTON ORIENT | H |
| Sat Oct 17 | Portsmouth | A |
| SAT OCT 24 | CAMBRIDGE UNITED | H |
| Sat Oct 31 | Colchester United | A |
| SAT NOV 07 | LUTON TOWN | H |
| Sat Nov 14 | Southend United | A |
| Sat Nov 21 | Brentford | A |
| SAT NOV 28 | BOURNEMOUTH | H |
| SAT DEC 05 | SOUTHEND UNITED | H |
| SAT DEC 12 | BARNET | H |
| Sat Jan 02 | Brighton & H.A. | A |
| SAT JAN 09 | BRISTOL ROVERS | H |
| Sat Jan 16 | Oxford United | A |
| SAT JAN 23 | READING | H |
| Sat Jan 30 | Wycombe Wndrs. | A |
| SAT FEB 06 | GILLINGHAM | H |
| Sat Feb 13 | leyton Orient | A |
| SAT FEB 20 | PORTSMOUTH | H |
| Sat Feb 27 | Cambridge United | A |
| SAT MAR 06 | COLCHESTER UNITED | H |
| Sat Mar 13 | Luton Town | A |

Home fixtures kick-off at 11.00am at the Nationwide Pavilion, Pipers Way - Kick-Off times are subject to change without prior warning.

youth fixtures

SWEB South West Counties Youth League

| | | |
|---------|--------------------------|---|
| Aug 22 | Cirencester Town | A |
| AUG 29 | CHELTHAM TOWN | H |
| Sept 05 | Plymouth Argyle | A |
| SEPT 12 | EXETER CITY | H |
| Sept 19 | AFC Newport | A |
| SEPT 26 | YEOVIL TOWN | H |
| Oct 03 | League Cup - Round 1 | |
| Oct 17 | Torquay United | A |
| OCT 24 | BATH CITY | H |
| Oct 31 | Swansea City | A |
| NOV 07 | BASHLEY | H |
| Nov 14 | Bristol Rovers | A |
| Nov 21 | League Cup - Round 2 | |
| NOV 28 | CARDIFF CITY | H |
| Dec 05 | Cardiff City | A |
| DEC 12 | CIRENCESTER TOWN | H |
| Dec 19 | Cheltenham Town | A |
| JAN 09 | PLYMOUTH ARGYLE | H |
| Jan 16 | Exeter City | A |
| JAN 23 | AFC NEWPORT | H |
| Jan 30 | Yeovil Town | A |
| FEB 13 | TORQUAY UNITED | H |
| Feb 20 | Bath City | A |
| FEB 27 | SWANSEA CITY | H |
| Mar 06 | Bashley | A |
| MAR 13 | BRISTOL ROVERS | H |
| Mar 20 | League Cup - Semi Finals | |
| Mar 27 | League Cup - Final | |

Home fixtures kick-off at 11.00am - and Wednesday fixtures kick-off at 2.00pm. At Allied Dumbard Centre or the BR Ground - Kick-Off times are subject to change without prior warning.

Please see future Matchday Magazine issues for the latest information on all Swindon Town Football Club fixtures

Worthington CUP

MATCH..... STATS



the officials

Referee:

Mr Andrew Hall

Andrew is an Air Conditioning Engineer and commenced refereeing in 1987.

He became a panel referee in 1995 and was promoted to Football League status in 1997. He has assisted in an Auto Windscreens Semi-Final and his hobbies include playing Water Polo for Sutton Coldfield.

Assistant Referees:

Mr S.L Gagen

Mr K.J Hawkes

match facts

Half-Time Score

Full-Time Score

Today's Attendance



ClubCall

0891 121 640

news updates, match commentaries
and all the latest ticket information.

* Calls charged at 50p at all times

TODAY'S TEAMS.....



**SWINDON
TOWN**

VS

**WYCOMBE
WANDERERS**



JIMMY GLASS

FRANK TALIA

STEVE MILDENHALL

CRAIG TAYLOR

MARK ROBINSON

BRIAN BORROWS

ALAN McDONALD

ALAN REEVES

ADAMS WILLIS

DAVID KERSLAKE

GARETH HALL

TY GOODEN

SOL DAVIS

DARREN BULLOCK

BOBBY HOWE

PHILIPPE CUERVO

KEVIN WATSON

ROBIN HULBERT

SCOTT LEITCH

LEE COLLINS

MARK WALTERS

GEORGE NDAH

IFEM ONUORA

CHRIS HAY

STEVE COWE

MARTIN TAYLOR

JASON COUSINS

MICHEAL FORSYTH

JASON KAVANAGH

PAUL McCARTHY

NICKY MOHAN

CHRIS VINNICOMBE

STEVE BROWN

DAVE CARROLL

JOHN CORNFORTH

MO HARKIN

KEITH RYAN

MICHEAL SIMPSON

STEVE McGAVIN

PAUL READ

KEITH SCOTT

MARK STALLARD

NEXT HOME MATCH...

Sat 15th Aug 1998 Nationwide League Div 1

3.00pm kick off VS **SUNDERLAND**

